

ReadyLift® (Part# 69-5060) Installation Instructions 2003-2008 Toyota 4Runner 2wd & 4wd 2006-2009 Toyota FJ Cruiser 2wd & 4wd

Please read instructions thoroughly and completely before beginning installation.
Check www.Readylift.com for any installation instruction updates
Installation by a trained mechanic is recommended.

Prior to lifting the vehicle, measure the stock height of the vehicle so that you have a base line to check after the kit has been installed. Measuring the vehicle from the bottom of the wheel to the lip of the fender is recommended.

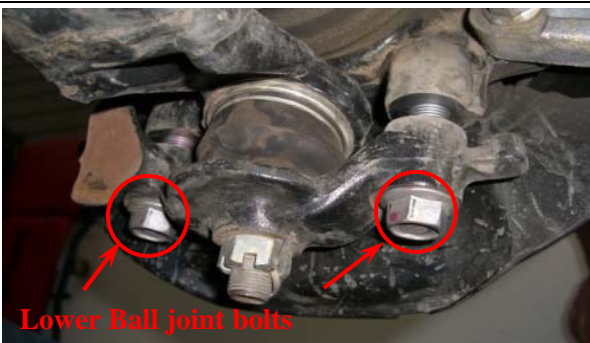
Position truck on a flat surface and lift vehicle by the frame so that the front wheels are off the ground. Use a floor jack and jack stands or a (2) two post lift if available and remove both front wheels.



1. Remove the skid plate by unbolting the four 12mm bolts that hold it on.



2. Starting from the passenger side, loosen the upper and lower strut mount nuts.



3. Loosen, but do not remove the 19mm lower control arm nut and bolt, Remove the 19mm lower ball joint bolts.



4. Remove the lower strut mount nut and bolt. Push the lower control arm down.

5. Remove the three upper strut mounting bolts.
Remove the strut from the vehicle and mount it in a bench vise. Install the ReadyLift® kit, and torque fasteners to OEM specifications. Note the shape of the ReadyLift® spacer; the strut will be rotated 180 degrees when reinstalled.



ReadyLift Suspension Inc.

3201 W. MacArthur Blvd., Santa Ana, CA 92704
Toll Free (800)549-4620 Local (714)862-2968 Fax (714)862-2972

Revised
11/08

ReadyLift® (Part# 69-5060) Installation Instructions
2003-2008 Toyota 4Runner 2wd & 4wd
2006-2009 Toyota FJ Cruiser 2wd & 4wd

Please read instructions thoroughly and completely before beginning installation.
Installation by a trained mechanic is recommended.

6. Reinstall the strut assembly in its stock location. Leave the three upper strut mounting nuts loose. Raise the lower control arm and install the lower strut mounting bolt and nut. Use a floor jack to raise the lower control arm up in order to get the lower ball joint bolts installed. Be sure to use a thread locker on the lower ball joint bolts. Be sure to tighten all nut and bolts to factory specs.

7. Repeat steps 2 through 7 on the Driver's Side of the vehicle. Follow each step closely, making sure to double-check the torque on all fasteners.



Differential Drop Installation



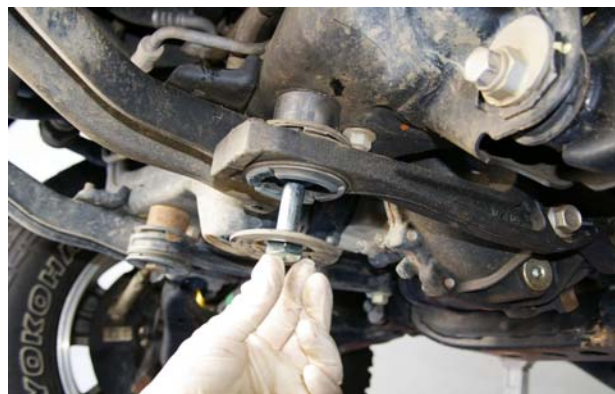
1. Position a floor jack under the front differential. Raise the pad so that it is touching the diff.



2. Remove the factory 19mm differential mounting nuts and bolts. The OEM washers will be reused.



3. Install the 1" spacers between the differential supports and the front cross-member. Install the new bolts with factory washers and the new nuts and washers. Torque to factory specs.



4. Re-install the skid-plate, use two OEM bolts for the front and the supplied and torque the bolts to factory specs. Re-install the wheels and torque to factory specs.

ReadyLift® (Part# 69-5060) Installation Instructions 2003-2008 Toyota 4Runner 2wd & 4wd 2006-2009 Toyota FJ Cruiser 2wd & 4wd

Please read instructions thoroughly and completely before beginning installation.

Installation by a trained mechanic is recommended.

SKID PLATE SPACER INSTRUCTIONS



Using the hardware provided, install the M8 bolt, washer, skid plate, and 1/2 tall spacer into the back two skid plate mounting points. Use the OEM hardware for the two front mounting parts.

REAR COIL SPACER INSTRUCTIONS

Rear Coil Spacer Installation

Position truck on a flat surface, chock the front wheels and lift vehicle by the frame so that the rear wheels are off the ground. Use a floor jack and jack stands or a (2) two post lift if available and remove both rear wheels.

Install one side at a time.

1. Support the rear axle with a jack. Remove the driver side lower shock bolt. You can use a pry bar to slide the shock off the mounting post.
2. Unbolt the sway bar end link at the sway bar.
3. Lower the jack, remove the driver side rear coil. Install coils spacer with nipple going into the recessed area in the bump stop.
4. Reinstall rear coil and spacer, reverse steps 1-3 and repeat on opposite side. Torque all hardware to factory specs.



ReadyLift Suspension Inc.

3201 W. MacArthur Blvd., Santa Ana, CA 92704

Toll Free (800)549-4620 Local (714)862-2968 Fax (714)862-2972

Revised
11/08

READYLIFT®

LEVELING SUSPENSION

ReadyLift® (Part# 69-5060) Installation Instructions
2003-2008 Toyota 4Runner 2wd & 4wd
2006-2009 Toyota FJ Cruiser 2wd & 4wd

**Please read instructions thoroughly and completely before beginning installation.
Installation by a trained mechanic is recommended.**

Wheel Alignment; a Certified Alignment Technician that is experienced with lifted vehicles is recommended to perform the alignment.

*It is recommended that you have your vehicle's alignment checked whenever installing new tires.

*It is also recommended that you adjust your headlights whenever your vehicle's ride height is altered.



Vehicle Handling Warning

Vehicles with larger wheels and tires will handle differently than stock vehicles.

Take time to familiarize yourself with the handling of your vehicle. DRIVE SAFELY and WEAR YOUR SEATBELT.

Installation Warning

Always wear proper safety equipment and use the correct tools when installing any suspension upgrade. Make sure vehicle is on a flat surface and you are using jack stands or a lift rated for the weight of the vehicle.

Warning! This ReadyLift® Leveling Kit is designed and engineered to level out a stock vehicle with no prior modifications. The use of this kit along with items such as rear lift blocks or spacers, add-a-leafs, airbags, suspension lifts, body lifts or any other type of lifting accessory shall be done at the vehicle owners risk and will void any and all warranties in effect or implied by ReadyLift®.

ReadyLift Suspension Inc.

3201 W. MacArthur Blvd., Santa Ana, CA 92704

Toll Free (800)549-4620 Local (714)862-2968 Fax (714)862-2972

Revised
11/08